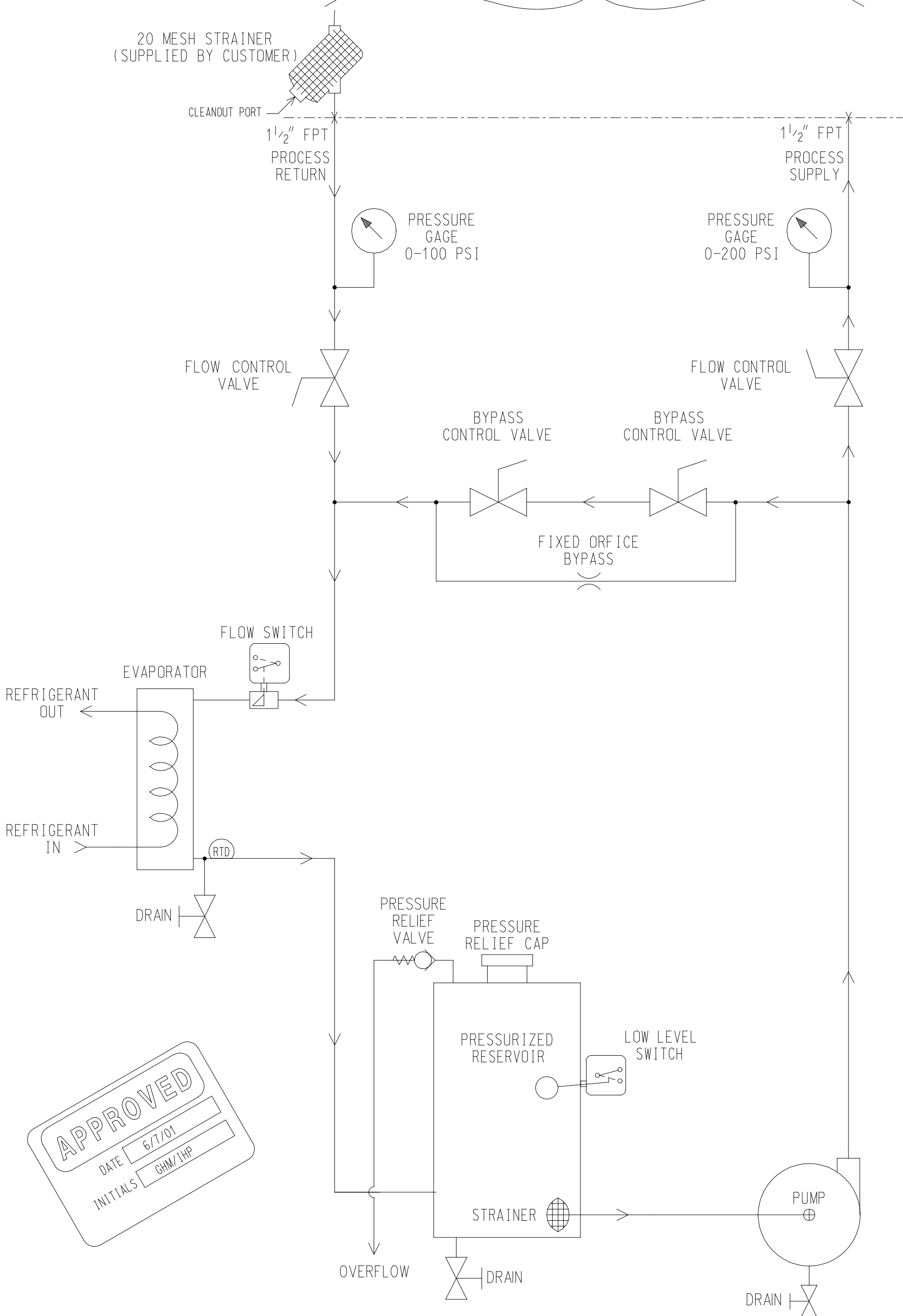


LTR:	REVISION:	DATE:	BY:
A	CREATED CAD DRAWING	5/29/01	GHM
-	-	-	-

PROCESS COOLING



**APPROVED**  
 DATE 6/7/01  
 INITIALS GHM/IHP

TITLE:	DCS L24 GXFER-PSC2B-VVO X=2WAY VALVE
DRAWING NO.	D8323

DRAWN BY:	GHM	DATE:	5/29/01
SHEET:	1 OF 1	FORMAT SIZE:	B
THIS DOCUMENT REMAINS THE PROPERTY OF LYDALL INDUSTRIAL THERMAL SOLUTIONS INC.. DISCLOSURE OR REPRODUCTION IN WHOLE OR IN PART IS FORBIDDEN WITHOUT PRIOR CONSENT.			

**Affinity**  
 LYDALL  
 INDUSTRIAL THERMAL SOLUTIONS  
 OSSISPEE OPERATION  
 775 ROUTE 16, P.O. BOX 1000, OSSISPEE, NH 03864  
 Tel. (603) 539-5005, Fax. (603) 539-2186