

REV	ECN	DESCRIPTION	BY	DATE
A	XX	XXXXXXXXXXXXXXXXXXXXXXX	XXX	MM/DD/YY

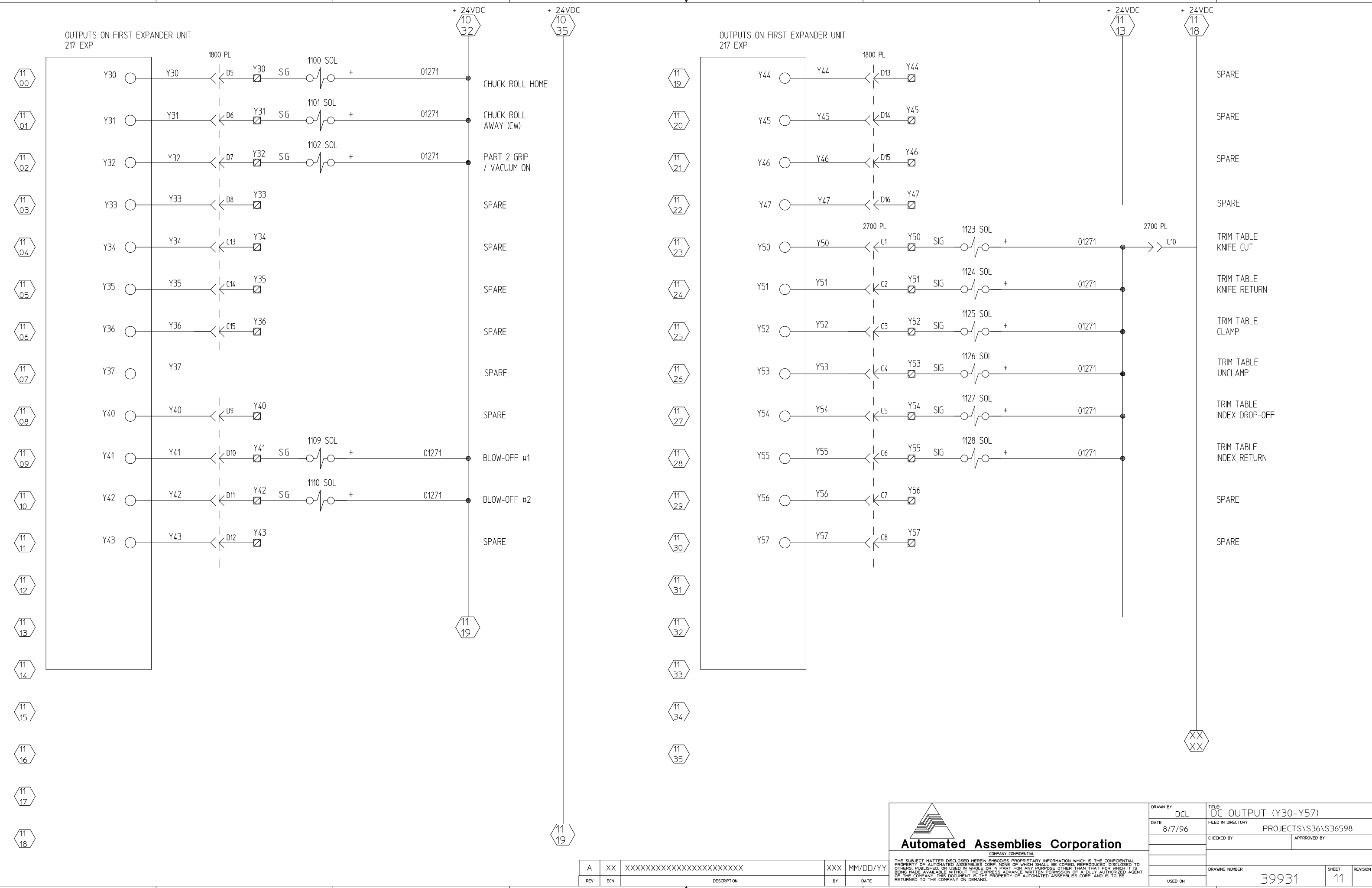
Automated Assemblies Corporation
COMPANY CONFIDENTIAL

THE SUBJECT MATTER DISCLOSED HEREIN EMBODIES PROPRIETARY INFORMATION WHICH IS THE CONFIDENTIAL PROPERTY OF AUTOMATED ASSEMBLIES CORP. NONE OF WHICH SHALL BE COPIED, REPRODUCED, DISCLOSED TO OTHERS, PUBLISHED, OR USED IN WHOLE OR IN PART FOR ANY PURPOSE OTHER THAN THAT FOR WHICH IT IS BEING MADE AVAILABLE WITHOUT THE EXPRESS ADVANCE WRITTEN PERMISSION OF A DULY AUTHORIZED AGENT OF THE COMPANY. THIS DOCUMENT IS THE PROPERTY OF AUTOMATED ASSEMBLIES CORP. AND IS TO BE RETURNED TO THE COMPANY ON DEMAND.

DRAWN BY DCL	TITLE DC INPUT (X30-X57)
DATE 8/7/96	FILED IN DIRECTORY PROJECTS\S36\S36598
CHECKED BY	APPROVED BY
DRAWING NUMBER 39931	SHEET 5
USED ON	REVISION

OUTPUTS ON FIRST EXPANDER UNIT
217 EXP

OUTPUTS ON FIRST EXPANDER UNIT
217 EXP



A	XX	XXXXXXXXXXXXXXXXXXXX	XXX	MM/DD/YY
REV	ECN	DESCRIPTION	BY	DATE

Automated Assemblies Corporation
COMPANY CONFIDENTIAL

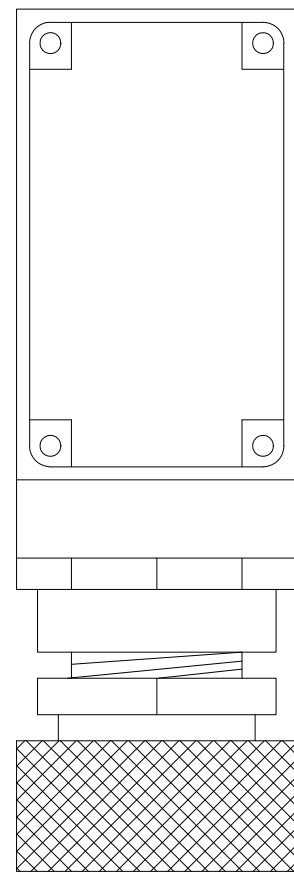
THE SUBJECT MATTER DISCLOSED HEREIN EMBODIES PROPRIETARY INFORMATION WHICH IS THE CONFIDENTIAL PROPERTY OF AUTOMATED ASSEMBLIES CORP. NONE OF WHICH SHALL BE COPIED, REPRODUCED, DISCLOSED TO OTHERS, PUBLISHED, OR USED IN WHOLE OR IN PART FOR ANY PURPOSE OTHER THAN THAT FOR WHICH IT IS BEING MADE AVAILABLE WITHOUT THE EXPRESS ADVANCE WRITTEN PERMISSION OF A DULY AUTHORIZED AGENT OF THE COMPANY. THIS DOCUMENT IS THE PROPERTY OF AUTOMATED ASSEMBLIES CORP. AND IS TO BE RETURNED TO THE COMPANY ON DEMAND.

DRAWN BY DCL	TITLE DC OUTPUT (Y30-Y57)
DATE 8/7/96	FILED IN DIRECTORY PROJECTS\S36\S36598
CHECKED BY	APPROVED BY
DRAWING NUMBER 39931	SHEET 11
USED ON	REVISION

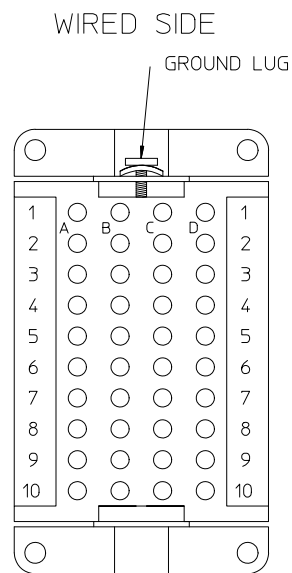
2700 PL CONTROL CABINET

2700 RECP TRIM TABLE

CABLE: OLFLEX #601841 CUT 30 FEET



INSIDE VIEW

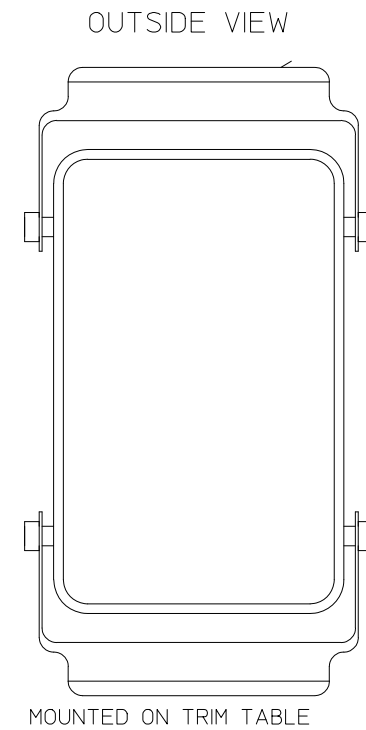


WIRED SIDE

GROUND LUG

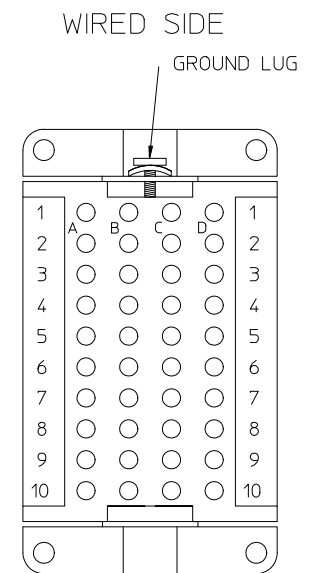
PIN #	I/O & WIRE #	OLFLEX #	DESCRIPTION OF I/O
A1	X50	1	(523 REED) KNIFE START POSITION
A2	X51	2	(524 REED) KNIFE CUT POSITION
A3	X52	3	(525 PROX) CLAMPS UNCLAMPED
A4	X53	4	(526 PROX) CLAMPS CLAMPED
A5	X54	5	(527 REED) TRIM TABLE START POSITION
A6	X55	6	(528 REED) TRIM TABLE DEPOSIT POSITION
A7	X56	7	SPARE
A8	X57	8	SPARE
A9		9	SPARE
A10	01270	10	+ 24 VOLT INPUT COMMON
B1		11	SPARE
B2		12	SPARE
B3		13	SPARE
B4		14	SPARE
B5		15	SPARE
B6		16	SPARE
B7		17	SPARE
B8		18	SPARE
B9		19	SPARE
B10	01272	20	0 VOLT COMMON
C1	Y50	21	(1123 SOL) KNIFE CUT SOLENOID
C2	Y51	22	(1124 SOL) KNIFE RETURN SOLENOID
C3	Y52	23	(1125 SOL) CLAMP SOLENOID
C4	Y53	24	(1126 SOL) UNCLAMP SOLENOID
C5	Y54	25	(1127 SOL) INDEX TO DROP-OFF SOLENOID
C6	Y55	26	(1128 SOL) INDEX RETURN SOLENOID
C7	Y56	27	SPARE
C8	Y57	28	SPARE
C9		29	SPARE
C10	01271	30	+ 24 VOLT OUTPUT COMMON
D1		31	SPARE
D2		32	SPARE
D3		33	SPARE
D4		34	SPARE
D5		35	SPARE
D6		36	SPARE
D7		37	SPARE
D8		38	SPARE
D9		39	SPARE
D10		40	SPARE

GREEN WIRE TO GROUND LUG



OUTSIDE VIEW

MOUNTED ON TRIM TABLE




WIRED SIDE

GROUND LUG

CABLE: OLFLEX #601841 CUT 6 FEET

A	XX	XXXXXXXXXXXXXXXXXXXX	XXX	MM/DD/YY
REV	EN	DESCRIPTION	BY	DATE

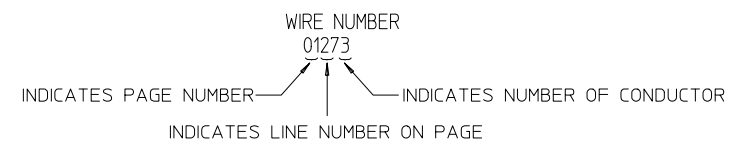
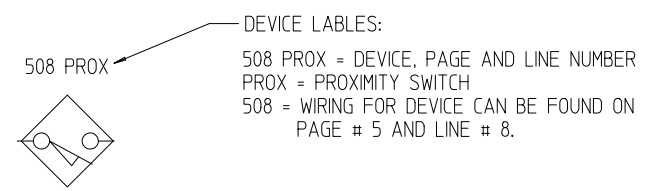
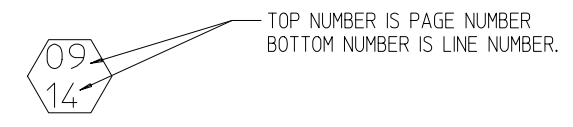

Automated Assemblies Corporation
COMPANY CONFIDENTIAL
THE SUBJECT MATTER DISCLOSED HEREIN EMBODIES PROPRIETARY INFORMATION WHICH IS THE CONFIDENTIAL PROPERTY OF AUTOMATED ASSEMBLIES CORP. NONE OF WHICH SHALL BE COPIED, REPRODUCED, DISCLOSED TO OTHERS, PUBLISHED, OR USED IN WHOLE OR IN PART FOR ANY PURPOSE OTHER THAN THAT FOR WHICH IT IS BEING MADE AVAILABLE WITHOUT THE EXPRESS ADVANCE WRITTEN PERMISSION OF A DULY AUTHORIZED AGENT OF THE COMPANY. THIS DOCUMENT IS THE PROPERTY OF AUTOMATED ASSEMBLIES CORP. AND IS TO BE RETURNED TO THE COMPANY ON DEMAND.

DRAWN BY DCL	TITLE: TRIM TABLE CONTROLS
DATE 8/7/96	FILED IN DIRECTORY PROJECTS\S36\S36598
CHECKED BY	APPROVED BY
DRAWING NUMBER 39931	SHEET 27
USED ON	REVISION

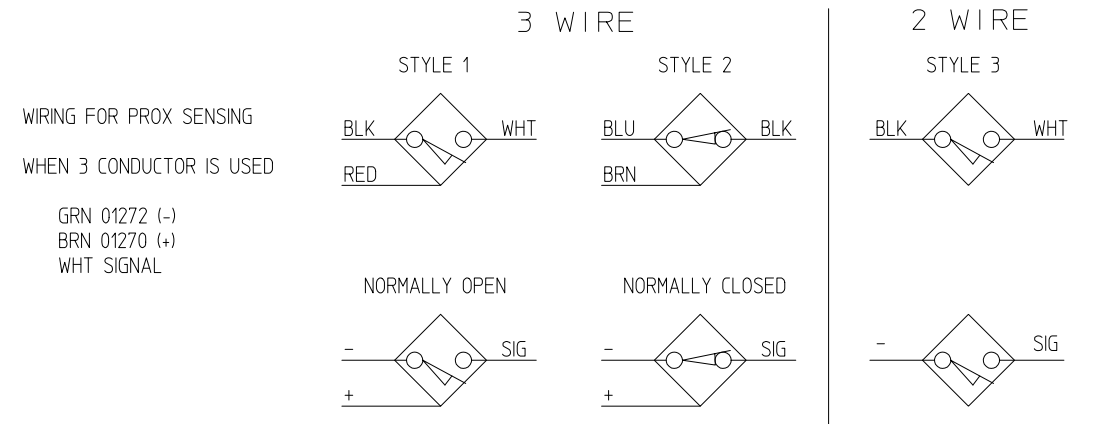
- 1) INCOMING POWER WIRING 38453.001
- 2) CONTROL POWER WIRING 38453.002
- 3) NOT SUPPLIED
- 4) DC INPUT SHEET (X0 - X27) 38453.004
- 5) DC INPUT SHEET (X30 - X57) 39931.005
- 6) NOT SUPPLIED
- 7) NOT SUPPLIED
- 8) NOT SUPPLIED
- 9) NOT SUPPLIED
- 10) DC OUTPUT SHEET (Y0 - Y27) 38453.010
- 11) DC OUTPUT SHEET (Y30 - Y57) 39931.011
- 12) NOT SUPPLIED
- 13) NOT SUPPLIED
- 14) NOT SUPPLIED
- 15) NOT SUPPLIED
- 16) OPERATORS STATION WIRING DIAGRAM (MTA-250) 38453.016
- 17) S.P.I. INTERFACE DIAGRAM 38453.017
- 18) CONNECTOR WIRING DIAGRAMS 38453.018
- 19) SPI INTERFACE ADAPTER D33474.019
- 20) 2nd MACHINE INTERFACE 38453.020
- 21) NOT SUPPLIED

- 22) NOT SUPPLIED
- 23) NOT SUPPLIED
- 24) NOT SUPPLIED
- 25) NOT SUPPLIED
- 26) NOT SUPPLIED
- 27) TRIM TABLE CONNECTOR WIRING 39931.027
- 28) NOT SUPPLIED
- 29) NOT SUPPLIED
- 30) NOT SUPPLIED

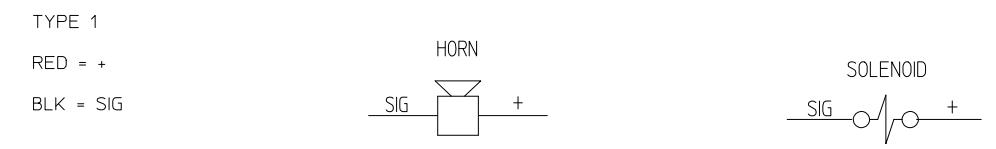
EXPLANATION OF WHAT THE SYMBOLS AND NUMBERS USED IN DRAWINGS INDICATE.



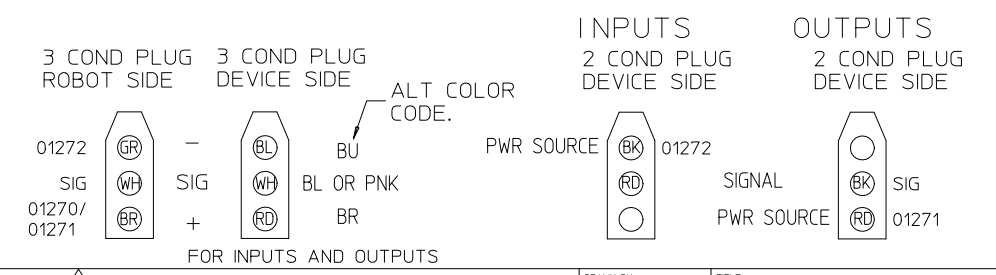
PROX STYLES, TYPES



TYPICAL WIRING FOR OUTPUT DEVICES



TYPICAL DEVICE MOLEX PLUG WIRING



DRAWN BY	DCL	TITLE	SPECIAL AZ-100P3 FX-96
DATE	8/7/96	FILED IN DIRECTORY	PROJECTS\S36\S36598
CHECKED BY		APPROVED BY	
DRAWING NUMBER	S36598	SHEET	COVER

X	XX	XXXXXXXXXXXXXXXXXX	XXX	XXXXXXX
REV	ECN	DESCRIPTION	BY	DATE

THE SUBJECT MATTER DISCLOSED HEREIN EMBODIES PROPRIETARY INFORMATION WHICH IS THE CONFIDENTIAL PROPERTY OF AUTOMATED ASSEMBLIES CORP. NONE OF WHICH SHALL BE COPIED, REPRODUCED, DISCLOSED TO OTHERS, PUBLISHED, OR USED IN WHOLE OR IN PART FOR ANY PURPOSE OTHER THAN THAT FOR WHICH IT IS BEING MADE AVAILABLE WITHOUT THE EXPRESS ADVANCE WRITTEN PERMISSION OF A DULY AUTHORIZED AGENT OF THE COMPANY. THIS DOCUMENT IS THE PROPERTY OF AUTOMATED ASSEMBLIES CORP. AND IS TO BE RETURNED TO THE COMPANY ON DEMAND.