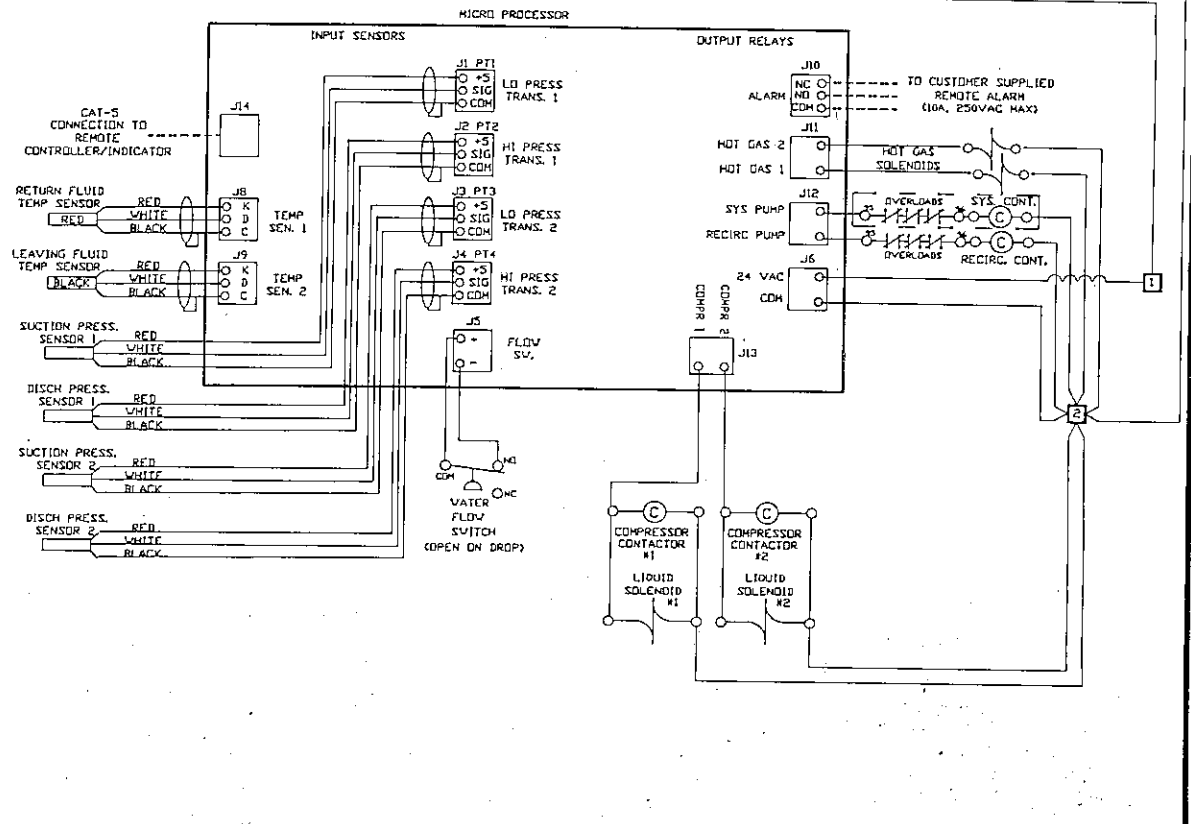
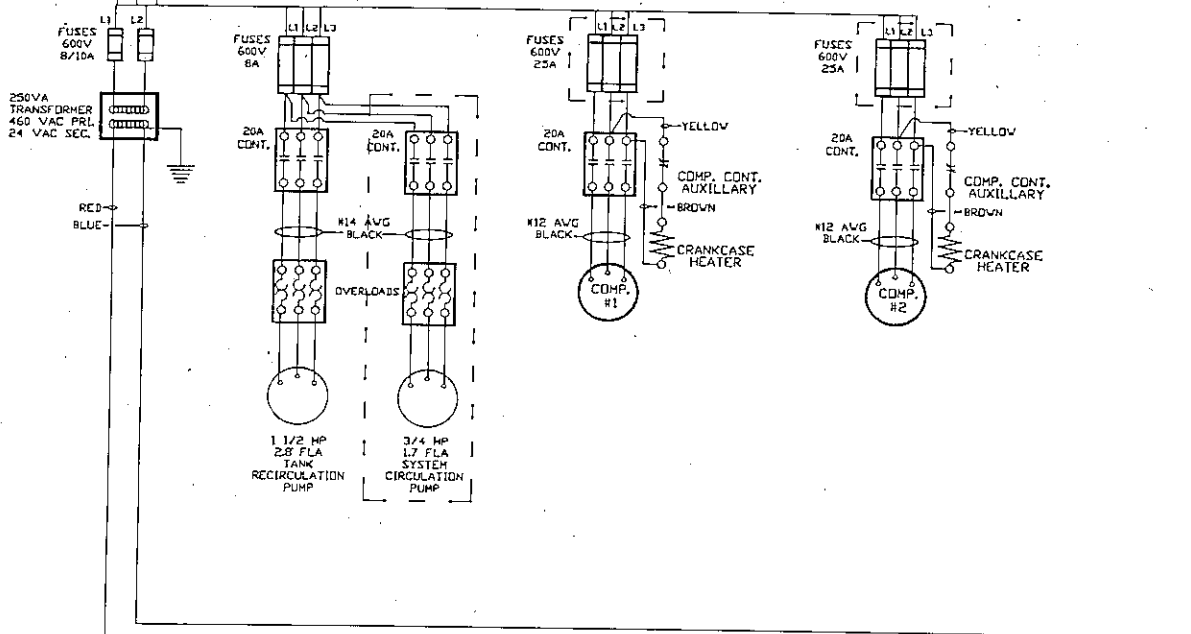


FIELD POWER CONNECTION  
450/60/3Ø  
MCA = 257 MOP = 40A  
(INCLUDES OPT. SYSTEM CIRC. PUMP)

COMP. MODEL #	ZB4SKCE-TFD
RLA	11.3
LRA	70.0

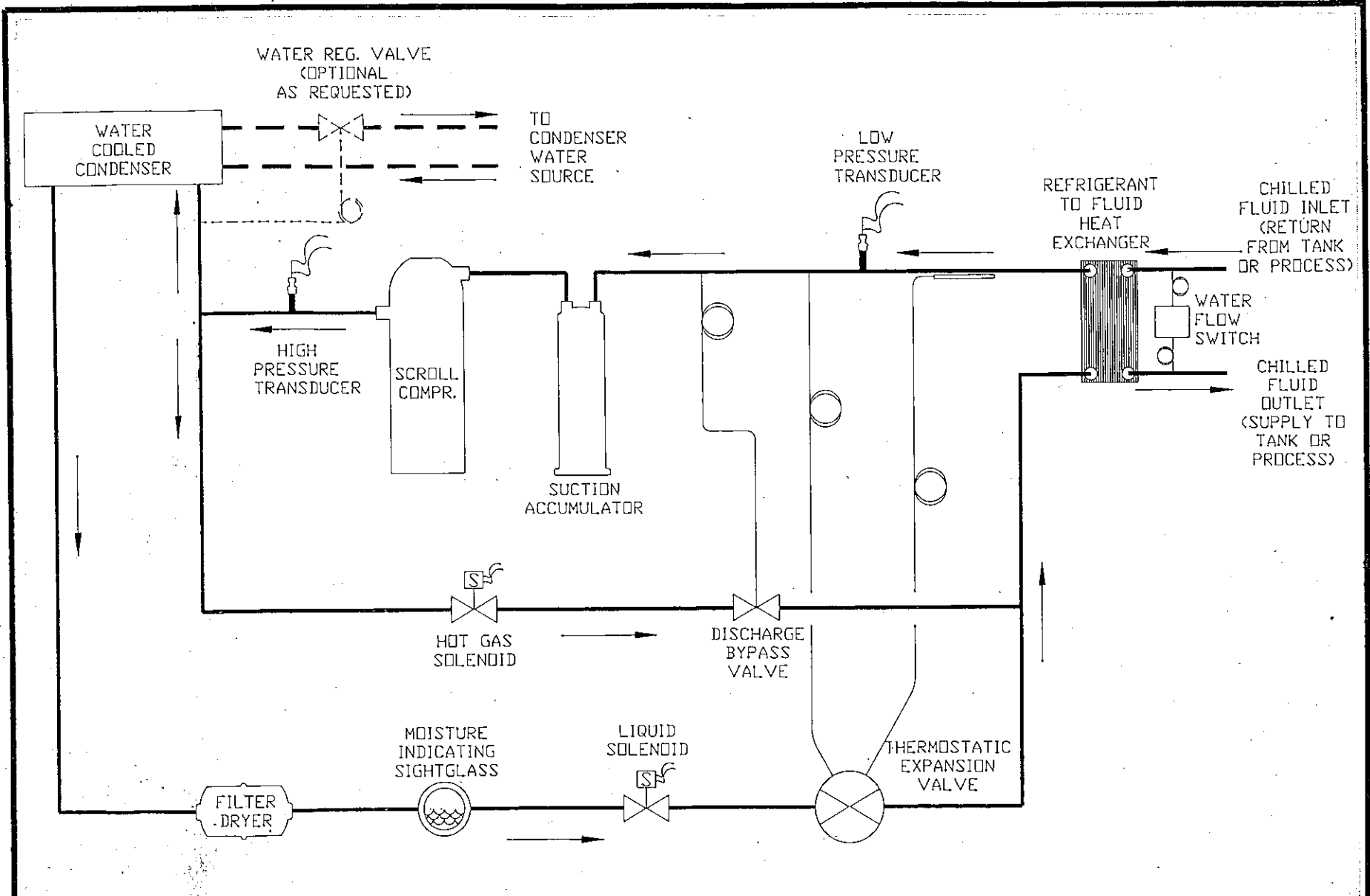
- NOTE:  
1- USE COPPER CONDUCTORS ONLY  
2- TIGHTEN ALL ELECTRICAL CONNECTIONS BEFORE POWER IS APPLIED  
3- ALL WIRING MUST BE DONE IN ACCORDANCE WITH NEC AND APPLICABLE LOCAL CODES.  
4- ALL FUSING DUAL ELEMENT TIME DELAY  
5- FOR FACTORY WIRED OPTIONS NOT SHOWN ON THIS DRAWING, SEE DRAWING NO. D00244

LEGEND:  
FACTORY WIRING  
FIELD WIRING  
OPTIONAL COMPONENTS



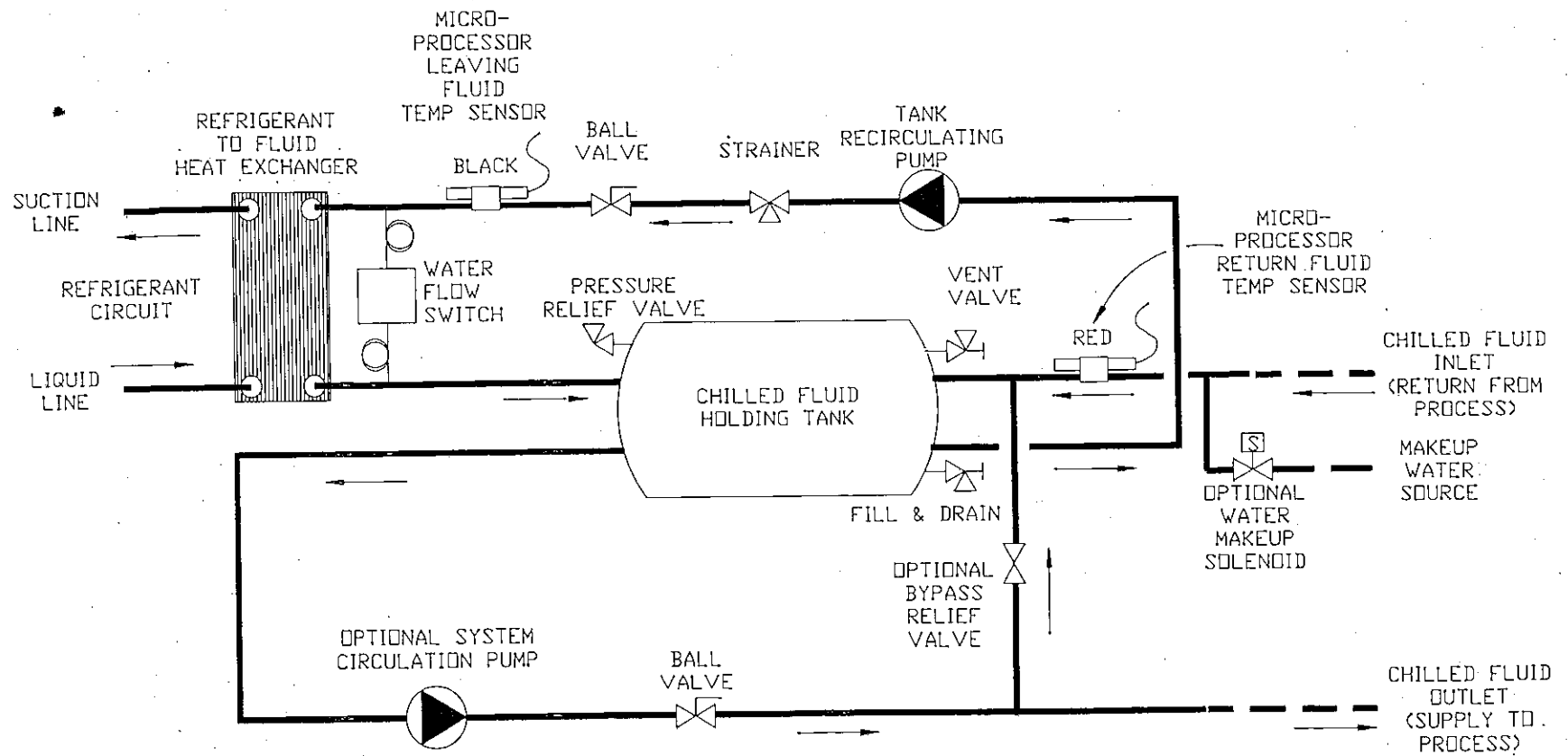
**SCHEMATIC WIRING DIAGRAM FOR PWCT120D2-T4-Z**

DRAWN BY	DATE	JOB NUMBER	DRAWING SEQUENCE
SLOAN	12/8/2003		1 OF 1
REVISION #1	DATE: 04/04/2006	COMPR.W/POE OIL	DRAWING NUMBER: D00832



LEGEND  
 FACTORY PIPING ———  
 FIELD PIPING - - -

SCHEMATIC PIPING FOR WATER COOLED CHILLER				
DRAWN BY	DATE		JOB NUMBER	DRAWING SEQUENCE
SLOAN	01/13/2005			1 OF 1
REVISION #	00	DATE: 00/00/00	DRAWING NUMBER	D00227



LEGEND

————— FACTORY PIPING  
 - - - - - FIELD PIPING

REV.1 ADD RETURN & SUPPLY TEMP SENSORS 11/01/2005

SCHMATIC PIPING FOR CHILLED FLUID  
CIRCUIT WITH FLUID RECIRCULATION TANK

DRAWN BY	DATE	JOB NUMBER	DRAWING SEQUENCE
SLOAN	01/11/2005		1 OF 1
DRAWING NUMBER		D00221	