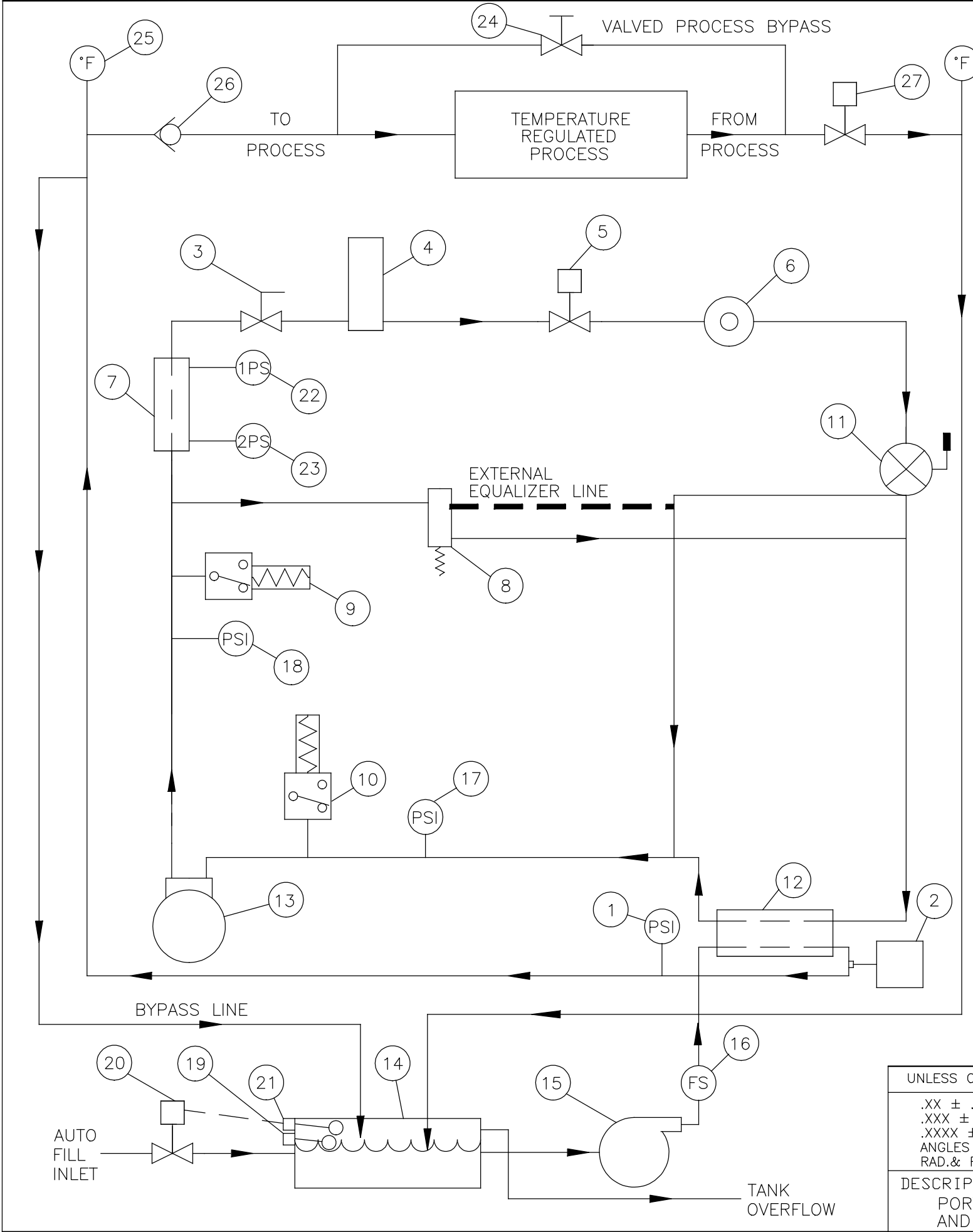


REVISIONS				
LTR	DESCRIPTION	BY	DATE	APPROVED

**PROPRIETARY NOTICE**

THE INFORMATION IN THIS DOCUMENT IS PROPRIETARY TO MOKON AND SHALL NOT BE USED OR REPRODUCED FOR ANY REASON WITHOUT PRIOR WRITTEN CONSENT.

27		OVERHEAD PIPING SOLENOID
26		OVERHEAD PIPING CHECK VALVE
25		THERMOMETER
24		MANUAL VALVE
23	2PS	LOW PRESSURE FAN SWITCH
22	1PS	HIGH PRESSURE FAN SWITCH
21	2FLT	AUTO FILL LEVEL SWITCH
20	2SOL	AUTO FILL SOLENOID VALVE
19	1FLT	LOW LEVEL SWITCH
18	.	HIGH PRESSURE GAUGE
17	.	LOW PRESSURE GAUGE
16	1FS	FLOW SWITCH
15	1MOT	ZONE PUMP
14	.	COOLANT TANK
13	1CMP	COMPRESSOR
12	.	EVAPORATOR
11	.	THERMAL EXPANSION VALVE
10	4PS	LOW PRESSURE SWITCH
9	3PS	HIGH PRESSURE SWITCH
8	.	HOT GAS BYPASS VALVE
7	.	CONDENSER
6	.	SIGHT GLASS
5	1SOL	LIQUID SOLENOID VALVE (N.C.)
4	.	FILTER/DRIER - LIQUID
3	.	SHUT OFF VALVE
2	1CONT	TEMPERATURE INDICATING CONTROLLER
1	.	PRESSURE GAGE 0-160 PSI
ITEM NO.	ELECT. SYMB.	DESCRIPTION



UNLESS OTHERWISE SPECIFIED	DRAWN	M. WALCZAK	07/22/11
.XX ± .010	CHECKED	MW	07/22/11
.XXX ± .005	APP.	AD	07/22/11
.XXXX ±	VERIFIED		
ANGLES ± 1/2°			
RAD.& FILLETS.005-.015			
DESCRIPTION FLOW SCHEMATIC: PORTABLE AIR COOLED CHILLER WITH AUTO FILL AND LOW LEVEL			

**MOKON**  
2150 Elmwood Avenue, Buffalo, New York 14207

B	MODEL NO. AS2J03DG	DWG. NO. AS2J03DG
SCALE NONE		SHEET 1 OF 1