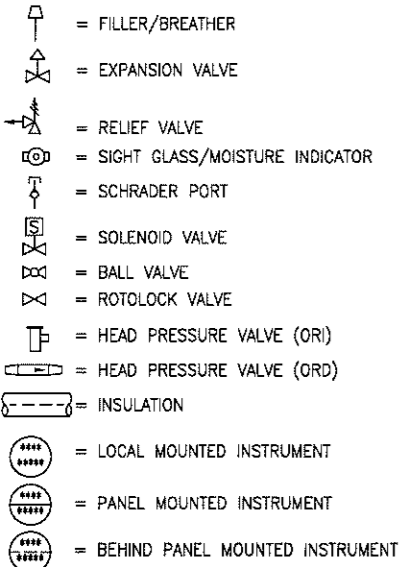
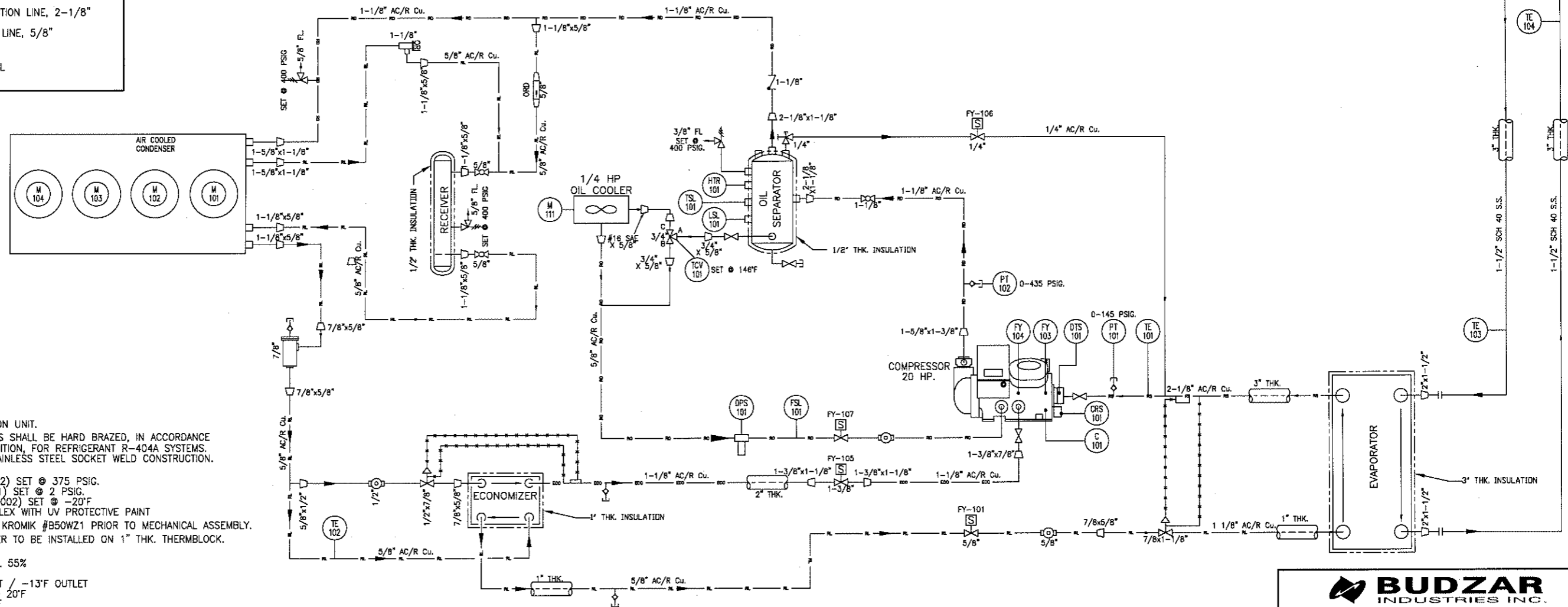
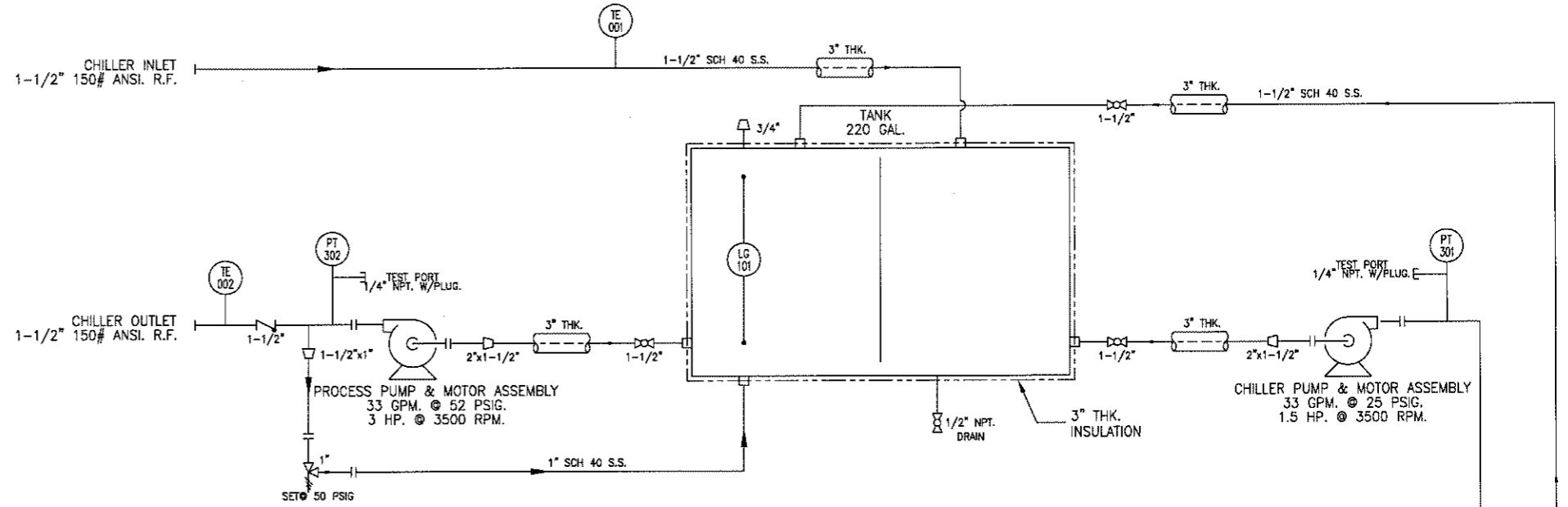


**LEGEND:**



HTR = OIL HEATER  
 TSL = TEMPERATURE SWITCH LOW  
 LSL = LOW LEVEL SWITCH  
 PT-301 = P1 PUMP PRESSURE TRANSDUCER  
 PT-302 = P2 PUMP PRESSURE TRANSDUCER  
 PT-101 = COMPRESSOR SUCTION PRESSURE TRANSDUCER  
 PT-102 = COMPRESSOR DISCHARGE PRESSURE TRANSDUCER  
 PT-103 = EVAPORATOR FLUID INLET PRESSURE TRANSDUCER  
 PT-104 = EVAPORATOR FLUID OUTLET PRESSURE TRANSDUCER  
 TE-001 = CHILLER INLET RTD  
 TE-002 = CHILLER OUTLET RTD  
 TE-101 = SUCTION TEMPERATURE THERMISTOR  
 TE-102 = LIQUID TEMPERATURE THERMISTOR  
 TE-103 = EVAPORATOR INLET TEMPERATURE RTD  
 TE-104 = EVAPORATOR OUTLET TEMPERATURE RTD  
 LG-101 = LOCAL MOUNTED SIGHT GLASS  
 FY = SOLENOID VALVE  
 DPS = DIFFERENTIAL PRESSURE SWITCH  
 FSL = FLOW SWITCH  
 M-101 = FAN #1 MOTOR CONTACTOR  
 M-102 = FAN #2 MOTOR CONTACTOR  
 M-103 = FAN #3 MOTOR CONTACTOR  
 M-104 = FAN #4 MOTOR CONTACTOR  
 TCV = TEMPERATURE CONTROL VALVE

--- = REFRIGERANT DISCHARGE LINE, 1-1/8"  
 --- = REFRIGERANT LIQUID LINE, 5/8"  
 --- = REFRIGERANT SUCTION LINE, 2-1/8"  
 --- = REFRIGERANT OIL LINE, 5/8"  
 --- = CAPILLARY TUBE  
 --- = ELECTRICAL SIGNAL  
 --- = ECO LINE



- NOTES:**
- DO NOT SUPPORT FIELD PIPING ON UNIT.
  - REFRIGERANT PIPING CONNECTIONS SHALL BE HARD BRAZED, IN ACCORDANCE WITH ANSI/ASHRAE-15 LATEST EDITION, FOR REFRIGERANT R-404A SYSTEMS. FLUID PIPING TO BE SCH. 40 STAINLESS STEEL SOCKET WELD CONSTRUCTION.
  - PLC SETTINGS:
    - HIGH PRESSURE CUTOFF (PT-102) SET @ 375 PSIG.
    - LOW PRESSURE CUTOFF (PT-101) SET @ 2 PSIG.
    - LOW TEMPERATURE CUTOFF (TE-002) SET @ -20°F
  - INSULATION: CLOSED CELL ARMAFLEX WITH UV PROTECTIVE PAINT
  - FRAME TO BE PRIMED WITH KEM KROMIK #B50WZ1 PRIOR TO MECHANICAL ASSEMBLY.
  - EVAPORATOR, TANK & ECONOMIZER TO BE INSTALLED ON 1" THK. THERMBLOCK.
  - NOMINAL DESIGN CONDITIONS:
    - FLUID: WATER/ETHYLENE GLYCOL 55%
    - FLOW: 33 GPM.
    - FLUID TEMPERATURE: -4°F INLET / -13°F OUTLET
    - TEMPERATURE RANGE: -15°F TO 20°F
    - TEMPERATURE SET POINT: -15°F
    - MAXIMUM DESIGN PRESSURE: 400 PSIG
    - REFRIGERANT CHARGE: R404A, 100 Lbs.
    - CONDENSING TEMPERATURE: 115°F
    - EVAPORATING TEMPERATURE: -23°F.
    - SUPERHEAT: 10°F.
    - CONDENSER SUBCOOLING: 10°F.
    - ECO EVAPORATING TEMPERATURE: 12°F
    - ECO SUPERHEAT: 8°F.
    - ECO LIQUID TEMPERATURE: 105°F IN, 21°F OUT
    - NOMINAL CAPACITY: 10 TONS @ DESIGN CONDITIONS
    - OIL COOLER OUTLET SET @ 140°F - 160°F

**BUDZAR INDUSTRIES INC.**  
 PHONE (440-918-0600) FAX (440-918-0600) EMAIL: ENGINEERING@BUDZAR.COM

The information contained in this drawing, including the design and position of construction, is the property of Budzar Industries, Incorporated and is confidential. All patent and design rights are reserved by Budzar Industries, Incorporated. The drawings, or the information contained herein, may not be reproduced in whole or in part, copied, or otherwise transmitted to any third party without the expressed written consent of Budzar Industries, Incorporated. Acceptance of this drawing will be construed as an agreement to the above.

REVISION	DATE	BY	APPD	DESCRIPTION
B	11/17/06	DB	AP	REVISED AS BUILT
A	08/21/06	CDZ	AP	REVISED FOR SHOP RELEASE

BIOSOURCE AMERICA M11034-1-2-GA  
 PIPING & INSTRUMENT DIAGRAM M11034-1-2-FW  
 LFA-10-SP M11034-1-2-PS  
 SHEET 1 OF 1  
 200805-11034-1-2  
**M11034-1-2-PS**